

Rigid insulating and identification markers

Cylindrical ER and square EC - unprinted



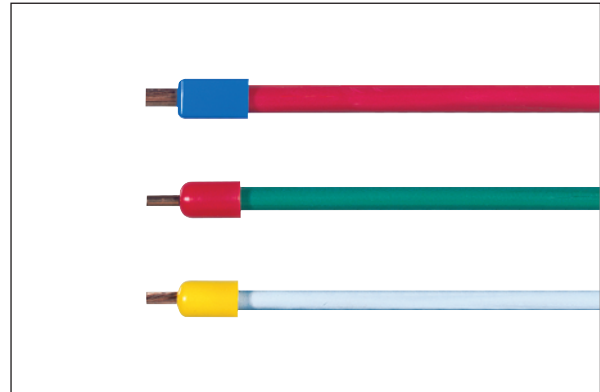
SES



ER - EC

Material: high impact polystyrene
Operating temperatures: -30 to +70°C
Elongation at break: 45 %
Tensile strength at break: 30 MPa

Application:
 ER and EC markers allow insulation, wire end terminations and wire marking.



Example for order:


code group	detail article	code colour
0126	xxxxxx	xxxx

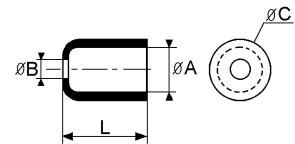
Standard colours:

001	002	003	004	007	010	013	017
white	blue	green	yellow	red	black	grey	lilac


PAGE TO TRANSLATE

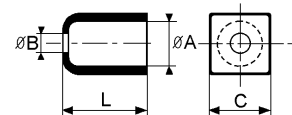
• Cylindrical unprinted ER markers

type	article number	for wire mm ²	dimensions (mm)			L	
			Ø A	Ø B	Ø C		
ER - 38	0126 0001 ***	2,5	3,8	2,2	5,3	10	500
ER - 45	0126 0002 ***	4	4,5	2,7	6	10	500
ER - 48	0126 0003 ***	2,5	4,8	2,2	6,3	10	500
ER - 50	0126 0004 ***	4	5	2,7	6,5	10	500
ER - 51	0126 0005 ***	6	5,1	3,3	6,6	10	500
ER - 60	0126 0006 ***	6	6	3,3	7,5	12	500
ER - 65	0126 0007 ***	10	6,5	4	8	12	500
ER - 80	0126 0008 ***	16	8	5	10	12	500
ER - 95	0126 0009 ***	16	9,5	6	12	14	500



• Square unprinted EC markers

type	article number	for wire mm ²	dimensions (mm)			L	
			Ø A	Ø B	Ø C		
EC - 42	0126 0021 ***	2,5	4,2	2,2	6	12	500
EC - 52	0126 0022 ***	4	5,1	2,7	7	12	500
EC - 61	0126 0023 ***	6	6	3,3	8	12	500



Rigid insulating and identification markers

Cylindrical ER and square EC - printed



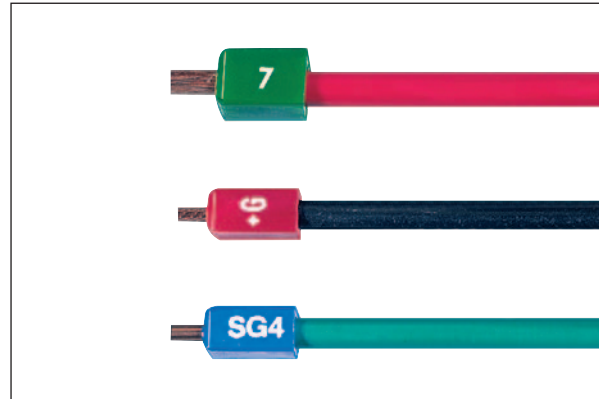
SES



ER - EC

Material: high impact polystyrene
Operating temperatures: -30 to +70°C
Elongation at break: 45 %
Tensile strength at break: 30 MPa

Application:
 ER and EC markers allow insulation, wire end terminations and wire marking.
 Print upon request: alphanumeric characters, symbols (please contact us).



Example for order:

code group	detail article	code colour
0356	xxxxxx	xxxx

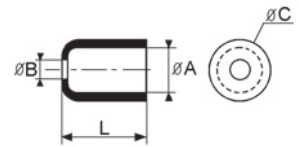
Standard colours:



PAGE TO TRANSLATE

• Cylindrical unprinted ER markers

type	article number		for wire mm ²	dimensions (mm)			L	img
	print 1 side	print 2 sides		Ø A	Ø B	Ø C		
ER - 38 imp	0356 0011 ***	0356 0031 ***	2,5	3,8	2,2	5,3	10	250
ER - 45 imp	0356 0012 ***	0356 0032 ***	4	4,5	2,7	6	10	250
ER - 48 imp	0356 0013 ***	0356 0033 ***	2,5	4,8	2,2	6,3	10	250
ER - 50 imp	0356 0014 ***	0356 0034 ***	4	5	2,7	6,5	10	250
ER - 51 imp	0356 0015 ***	0356 0035 ***	6	5,1	3,3	6,6	10	250
ER - 60 imp	0356 0016 ***	0356 0036 ***	6	6	3,3	7,5	12	250
ER - 65 imp	0356 0017 ***	0356 0037 ***	10	6,5	4	8	12	250
ER - 80 imp	0356 0018 ***	0356 0038 ***	16	8	5	10	12	250
ER - 95 imp	0356 0019 ***	0356 0039 ***	16	9,5	6	12	14	250



• Square EC markers printed

type	article number		for wire mm ²	dimensions (mm)			L	img
	print 1 side	print 2 sides		Ø A	Ø B	C		
EC - 42 imp	0356 0054 ***	0356 0051 ***	2,5	4,2	2,2	6	12	250
EC - 52 imp	0356 0055 ***	0356 0052 ***	4	5,1	2,7	7	12	250
EC - 61 imp	0356 0056 ***	0356 0053 ***	6	6	3,3	8	12	250

