

# SES-SP clamps with adhesive base **SES** PAGE TO TRANSLATE



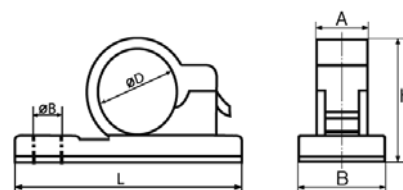
## SES-SP

**Material:** polyamide 6.6  
**Colour:** black  
**Operating temperatures:** -40 to +80°C  
**Dielectric strength:** 550 kV/mm  
**Flame resistance:** V2 UL94  
**Adhesive:** adhesive foam protected by release paper

**Application:** clamp with adhesive base with clip for closing, for fixing of cables. It can be fixed on the support by a screw M4 or using an adhesive at the places where drilling is impossible. The opening of the support is carried out using a screwdriver. It is advisable to read the instructions for the particular adhesive being used, for example "using on a clean and smooth surface".



type	article number	Ø D	Ø B	dimensions (mm)				100
				L	H	A	B	
SP-06	0686 0210 010	6	4,9	25,6	13,2	7,7	13,2	100
SP-09	0686 0220 010	9	4,9	28,5	15,5	8,2	13,3	100
SP-12	0686 0230 010	12	5,2	34,5	19,5	11,6	16,4	100
SP-14	0686 0240 010	14	4,8	36,4	20,3	11,2	16,4	100
SP-16	0686 0250 010	16	5,2	38,2	21,3	12	16,1	100
SP-18	0686 0260 010	18	4,8	41	24,8	11	16,2	100



## SES-CT adhesive miniature clamp

**SES**



## SES-CT

**Material:** high impact Polystyrene  
**Colour:** light grey RAL7035  
**Operating temperatures:** -40 to +70°C  
**Dielectric strength:** 150 kV/mm  
**Adhesive:** adhesive foam protected by release paper.  
**Pack:** 10 carriers of 10 pre-cut cable clamps  
**Application:** guide and route wires



type	article number	100
SES-CT	0711 0001 013	100

